

Internal Glass Mount Antenna

EF-[UHF] Series

PANORAMA  ANTENNAS



EF-[UHF] Series

- Covert application
- No-hole adhesive installation
- Can be removed without a trace

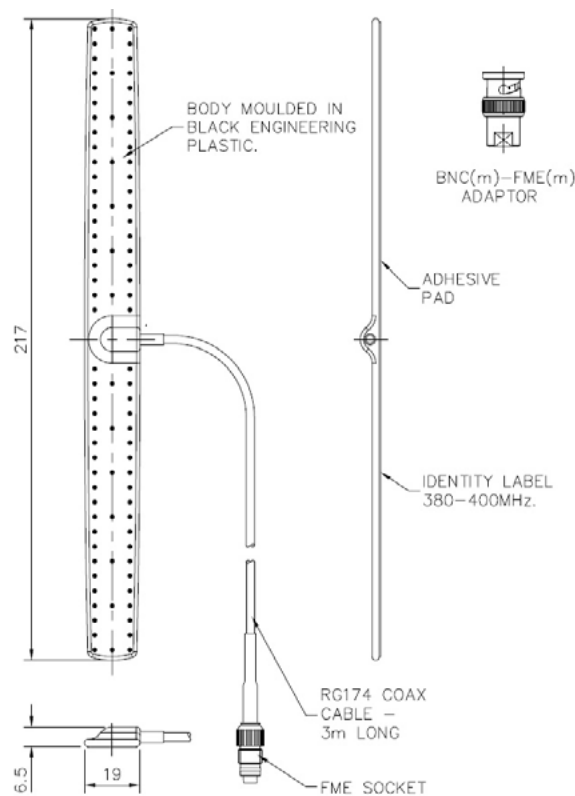
The EF series UHF internal glass mounting antenna provides a low visibility antenna solution for discreet and covert installations or simply where a simple adhesive fitment is desired.

The antenna tuning is optimised to match a range of different automotive glass types to provide consistent performance in a wide range of vehicles and mounting positions.

With a flexible form factor, the antenna will adapt to the curvature of the glass and is easy to install with the pre-fitted automotive grade adhesive pad. The antenna is completely over-moulded for durability and sealed connection of the supplied high-quality RG174 coaxial cable, which allows the fitment of a wide range of connectors.

Technical Drawing

EF-S1-3BL Shown



Internal Glass Mount Antenna

EF-[UHF] Series

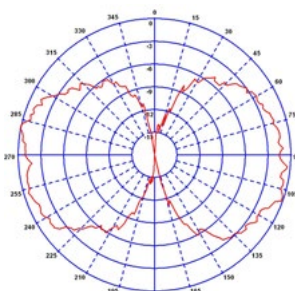
PANORAMA ANTENNAS

Product Data

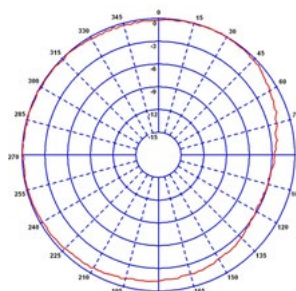
Part No.							
		EF-S1	EF-S2	EF-S3	EF-442	EF-460	EF-486
Electrical Data							
Frequency Range (MHz)		380-400	410-430MHz	380-420MHz	420-465MHz	450-470MHz	458-515MHz
Peak Gain: Isotropic (excl cable loss)				2dBi			
Typical VSWR*				<2:1			
Polarisation				Vertical			
Pattern				Omni-directional			
Impedance				50Ω			
Max Input Power (W)				20			
Mechanical Data							
Dimensions (mm)	Length	217 (8.5")					
	Width	19 (0.7")					
	Depth	6.5 (0.25")					
Operating Temp (°C)				-40° / +80°C (-40°-176° F)			
Material		TPE					
Colour		Black					
Mounting Data							
Fixing		Internal glass mount					
Material		Acrylic adhesive pad					
Colour		Black					
Cable Data							
Type		RG174					
Diameter (mm)		2.8 (0.1")					
Length (m)		3 (10') or 5 (16')					
*Connector Configurations 3m Variants							
BNC (m) (adaptor)		EF-S1-3BL	EF-S2-3BL	EF-S3-3BL	EF-442-3BL	EF-460-3BL	EF-486-3BL
TNC (m) (adaptor)		EF-S1-3TL	EF-S2-3TL	EF-S3-3TL	EF-442-3TL	EF-460-3TL	EF-486-3TL
FME (f) (fitted)		EF-S1-3F	EF-S2-3F	EF-S3-3BL	EF-442-3F	EF-460-3F	EF-486-3F
BNC (m) (fitted)		EF-S1-3B	EF-S2-3B	EF-S3-3B	EF-442-3B	EF-460-3B	EF-486-3B
*Connector Configurations 5m Variants							
BNC (m) (adaptor)		EF-S1-5BL	EF-S2-5BL	EF-S3-5BL	EF-442-5BL	EF-460-5BL	EF-486-5BL
TNC (m) (adaptor)		EF-S1-5TL	EF-S2-5TL	EF-S3-5TL	EF-442-5TL	EF-460-5TL	EF-486-5TL
FME (f) (fitted)		EF-S1-5F	EF-S2-5F	EF-S3-5F	EF-442-5F	EF-460-5F	EF-486-5F
BNC (m) (fitted)		EF-S1-5B	EF-S2-5B	EF-S3-5B	EF-442-5B	EF-460-5B	EF-486-5B

Pattern

Typical E-Plane (390MHz)

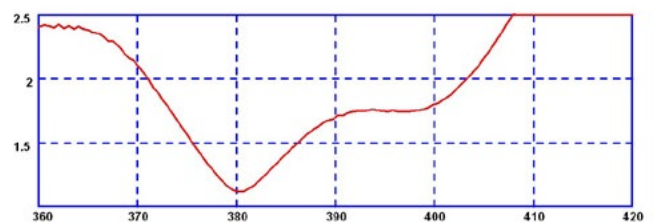


Typical H-Plane (390MHz)



Electrical Data

Typical VSWR* - EF-S1 Antenna (380-400MHz)



*VSWR measured on a typical glass sheet with 3m (10') of RG174 cable